

# Field Day

FABRICS BY ALISON GLASS



Relay Race Quilt Design:  
**Alison Glass**

Quilt Size: **72" x 80"**

[andoverfabrics.com](http://andoverfabrics.com)



## About Field Day

Field Day is a collection of prints representing the growth of plants in their wild and natural settings. The focus is on the details in nature, specifically the time of growth when blooms are reaching their full potential, and giving it their all. — *Alison Glass*

andover

makower uk  
*The Henley Studio*

Free Pattern Download Available

1384 Broadway New York, NY 10018  
Tel. (800) 223-5678 • [andoverfabrics.com](http://andoverfabrics.com)

# Relay Race Quilt



Introducing Andover Fabrics new collection: **Field Day** by Alison Glass

Quilt designed by Alison Glass

Quilt finishes 72" x 80"

*Showy, exotic floral prints are the focus of this colorful quilt. The piecing couldn't be simpler—the columns are made up of rectangles. The quilt is large enough to brighten a twin or double bed and colorful enough to liven up a wall.*

## Fabric Requirements

|                   |            | Yardage         | Fabric  |           |         |
|-------------------|------------|-----------------|---------|-----------|---------|
| <b>Fabric A</b>   | sashes     | 2¾ yards        | 7019-C  |           |         |
| <b>*Fabric B</b>  | rectangles | ¾ yard          | 7023-GY |           |         |
| 19 Fat 1/8's      | rectangles | fat ¼ yard each |         |           |         |
|                   |            | 7019-G          | 7019-P  | 7020-CL   | 7020-GC |
|                   |            | 7022-C          | 7022-GB | 7022-GN   | 7022-P  |
|                   |            | 7022-PG         | 7023-CT | 7023-PG   | 5900-CG |
|                   |            | 5900-G          | 5900-GB | 5900-NR   | 5900-P  |
|                   |            | 5900-P1         | 5900-T  | A-T-Flash |         |
| <b>Backing</b>    |            | 5 yards         | 7020-PE |           |         |
| *includes binding |            |                 |         |           |         |

## Cutting Directions

**Note:** Read assembly directions before cutting patches. All measurements are cut sizes and include ¼" seam allowances. WOF designates the width of fabric from selvedge to selvedge (approximately 42" wide).

- Fabric A** Fussy-cut (5) sashes approximately 8½" x 80½" (read Step 1)
- Fabric B** Cut (8) strips 2½" x WOF for binding  
Cut (4) rectangles 4½" x 8½"
- 19 Fat 1/8's** From each: Cut (4) rectangles 4½" x 8½"
- Backing** Cut (2) panels 40" x 88", pieced to fit quilt top with overlap on all sides

## Making the Quilt

1. Cut 5 Fabric A sashes lengthwise, each approximately 8" to 8½" wide. Fussy-cut 3 of them with the rose vine centered on each. The yardage is enough to allow for shifting the sashes lengthwise so the "nosegays" can be positioned as shown in the photograph. It's okay if the sashes are cut narrower to accommodate the print after shrinkage.
2. Referring to the quilt photo, arrange 20 rectangles in each of 4 columns in the order shown, or as you wish. Join the rectangles. Press the seam allowances in one direction. Make 4 columns all alike.
3. Sew the pieced columns between the sashes in the order shown, turning alternating pieced columns upside down. Press the seam allowances toward the sashes.

## Finishing the Quilt

4. Layer the quilt with batting and backing and baste. Quilt in the ditch around sashes and rectangles. Quilt around the printed motifs in the sashes. Bind to finish the quilt.

# Relay Race Quilt

---



Quilt Diagram

# Field Day

FABRICS BY ALISON GLASS



7019-G\*



7019-C\*



7019-P\*

Blend with  
Sun Print  
by Alison Glass



5900-CG\*



5900-G\*



5900-GB\*



5900-NR\*



5900-P\*



5900-P1\*



5900-T\*

andover



makower uk  
*The Henley Studio*



7020-CL\*



7020-GC\*



7020-PE\*



7021-C



7021-CY



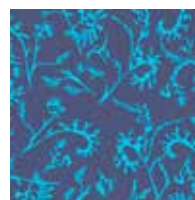
7021-G



7021-P



7022-C\*



7022-GB\*



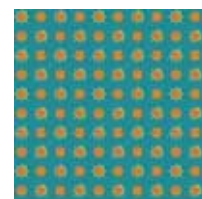
7022-GN\*



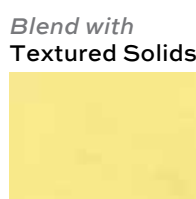
7022-P\*



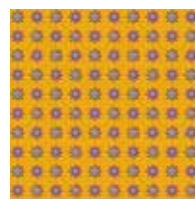
7022-PG\*



7023-CT\*



A-T-Flash\*



7023-GY\*



7023-PG\*

Blend with  
Textured Solids

\*Indicates fabrics used in quilt pattern.  
Fabrics shown are 10% of actual size.

Free Pattern Download Available

1384 Broadway New York, NY 10018  
Tel. (800) 223-5678 • andoverfabrics.com